



108N

Neoprene Closed Cell Sponge Seal

PRODUCT CUT SHEET

Material

Aluminum Alloy 6063, T5 Temper
Synthetic EPDM Rubber in Polypropylene Thermoplastic Matrix
Closed Cell Advanced Elastomeric Foam
Color is Black

- Very Good Abrasion Resistance, Tensile Strength and Memory
- Flame-Resistant
- Moisture-Resistant
- Temperature Range -50°F to 275°F
- Good Resistance to Ozone, Sunlight and Aging
- BHMA Certified to ANSI/BHMA A156.22 Performance Tests for Heat and Cold
- #6 x 3/4" Stainless Steel Sheet Metal Screws Furnished
- Screw Holes Slotted for Adjustment
- Patent Pending Microcellular EPDM

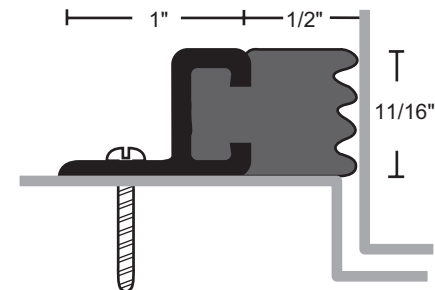
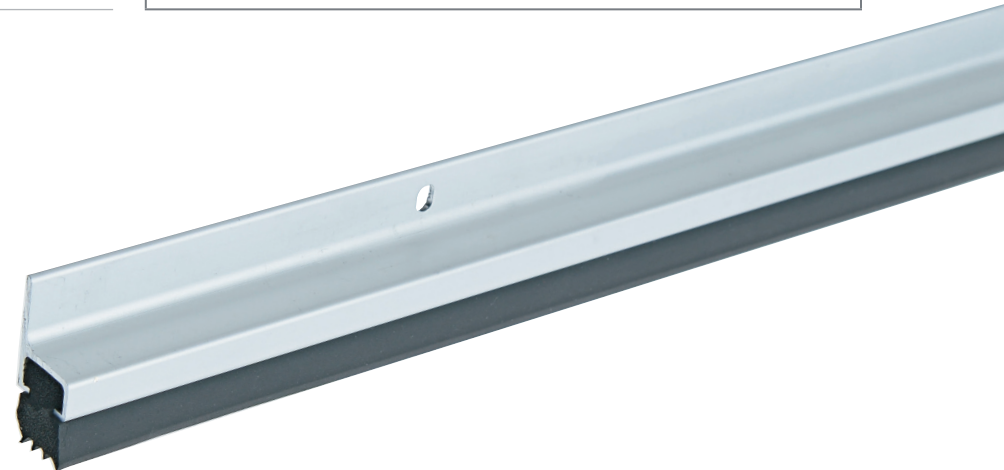
Finishes

108NA Anodized Aluminum

Options

FATT - Fast Attach Tape

PROJECT:
SUBMITTED BY:
DATE:
NOTES:



NGP-GKT-108N-PCS-1123-A

NATIONAL GUARD PRODUCTS, INC.

MEMPHIS

4985 East Raines Road
Memphis, TN 38118

CARSON CITY

3689 Arrowhead Drive
Carson City, NV 89706

Fax: (800) 255-7874
Email: info@ngp.com

Quotes: quotes@ngp.com
Orders: orders@ngp.com

ngp.com
1-800-NGP-RUSH