



653

Offset Threshold

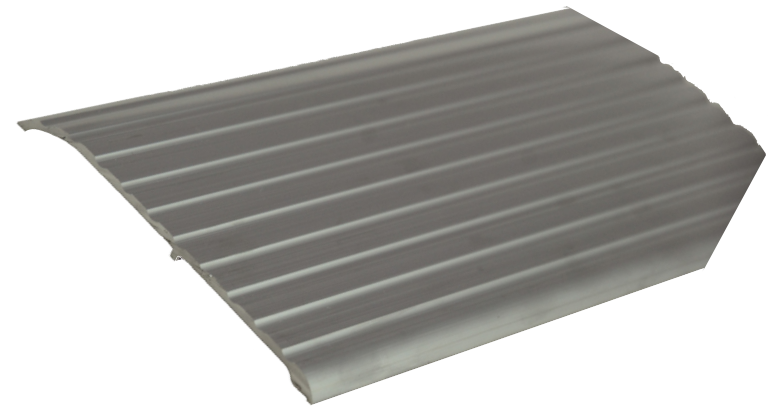
PRODUCT CUT SHEET

PROJECT:
SUBMITTED BY:
DATE:
NOTES:

Material and Features

Aluminum Alloy 6063, T5 Temper

- ▶ 5 1/2" Wide x 1/2" Tall
- ▶ Fluted top
- ▶ BHMA Certified to ANSI/BHMA A156.21 1,000 Lb. Load Test
- ▶ Typical Wall Thickness: .125"
- ▶ Weight: .78 Lbs./Ft.
- ▶ #10 x 1 1/2" FH Zinc Plated Wood Screws Included.
Dark Bronze Supplied With DKB Thresholds



Finishes

Mill Finish

DKB - Dark Bronze Finish

Options



Optional Slip Resistant SIA Finish



NGP-THR-653-PCS-1023-A

NATIONAL GUARD PRODUCTS, INC.

MEMPHIS

4985 East Raines Road
Memphis, TN 38118

CARSON CITY

3689 Arrowhead Drive
Carson City, NV 89706

Fax: (800) 255-7874

Email: info@ngp.com

Quotes: quotes@ngp.com

Orders: orders@ngp.com

ngp.com
1-800-NGP-RUSH