



SCBY

Aluminum Sliding Door Hardware — Soft Close

PRODUCT CUT SHEET

PROJECT:

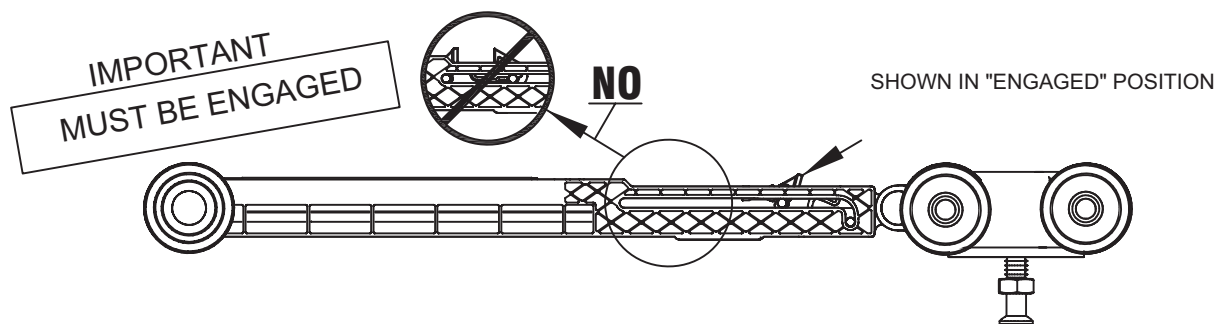
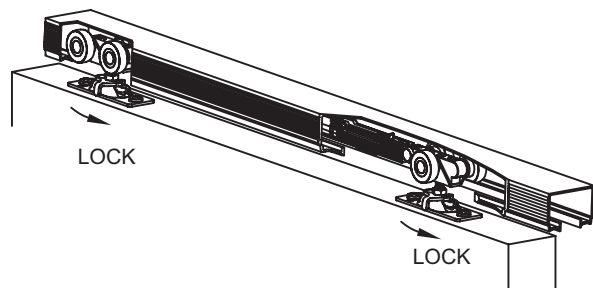
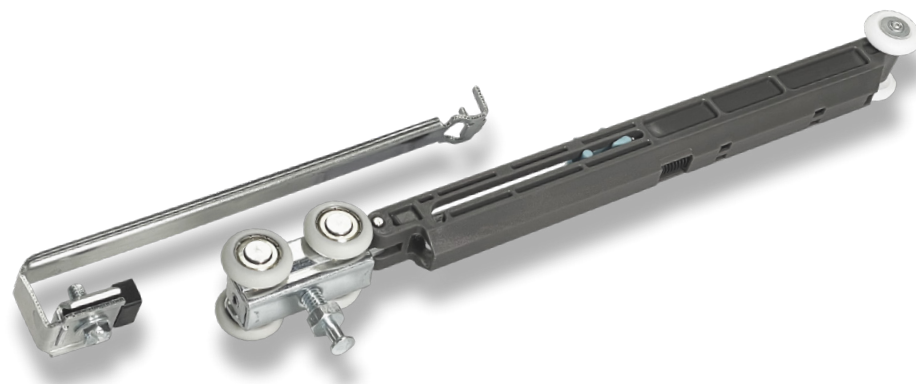
SUBMITTED BY:

DATE:

NOTES:

For Single Sliding Aluminum Hardware Sets with Doors 120 lbs. – 150 lbs.

- ▶ Designed for Doors 120 lbs. – 150 lbs.
- ▶ Minimum Door Width When Using One Soft Close Device on a Single Door is 16"
- ▶ Minimum Door Width When Using Two Soft Close Devices for Soft Close Both Directions on a Single Door is 31"
- ▶ Slows Travel of the Door to Softly Close
- ▶ For By-Pass and Bi-Parting Sliding Aluminum Hardware Sets. For Both Directions Order (2) Sets SCBY
- ▶ For Soft Close Both Directions on Sidewall and Pocket Door Applications



NGP-SLI-SCBY-PCS-0723-A

NGP MEMPHIS
4985 East Raines Road
Memphis, TN 38118
orders@ngp.com

NGP VEGAS
4584 Calimesa Street
Las Vegas, NV 89115
vegasorders@ngp.com

ngp.com
1-800-NGP-RUSH