



SLSS1-6-SC

Stainless Steel Sliding Door Hardware — Barn Door Top Mount

PRODUCT CUT SHEET

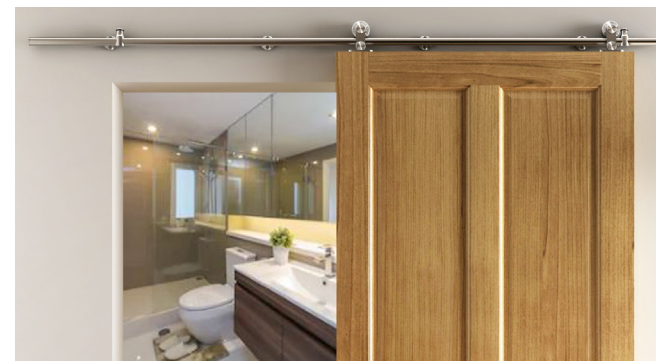
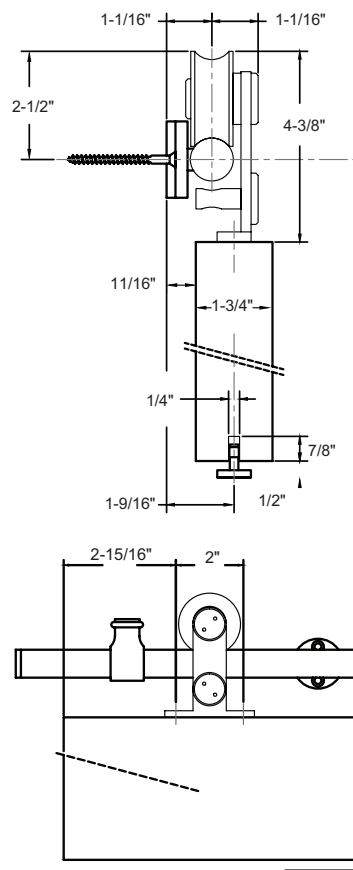
Top Mount Round Track System (With Soft Close) — Track Length 78 3/4"

- Fits 1" to 2" Thick Door Panel
- Brushed Stainless Steel 304
- Side Wall Mount
- Nylon Coated Stainless Steel Wheels for Smooth Operation
- For Sliding Doors up to 220 lbs. Each
- Meets ADA Push Force Requirements
- 5-Year Warranty
- Order Two Sets for Bi-Parting Applications
- Soft Close / Open Hardware is Included for Both Directions in Addition to the SLSS1-6 Complete Kit Contents

Complete Kits Include:

- | | |
|---------------------------|-----------------|
| (1) Track with Soft Close | (2) Door Stops |
| (2) Hangers | (1) Floor Guide |

SLSS1-6 includes: (5) Wall Attachments



Note: For Door Sizing Refer to Installation Instruction.

NGP MEMPHIS
4985 East Raines Road
Memphis, TN 38118
orders@ngp.com

NGP VEGAS
4584 Calimesa Street
Las Vegas, NV 89115
vegasorders@ngp.com

NGP-SLI-SLSS1-6-SC-PCS-0723-A

ngp.com
1-800-NGP-RUSH

PROJECT:
SUBMITTED BY:
DATE:
NOTES: