



# SLSSI-8

Stainless Steel Sliding Door Hardware — Barn Door Top Mount

## PRODUCT CUT SHEET

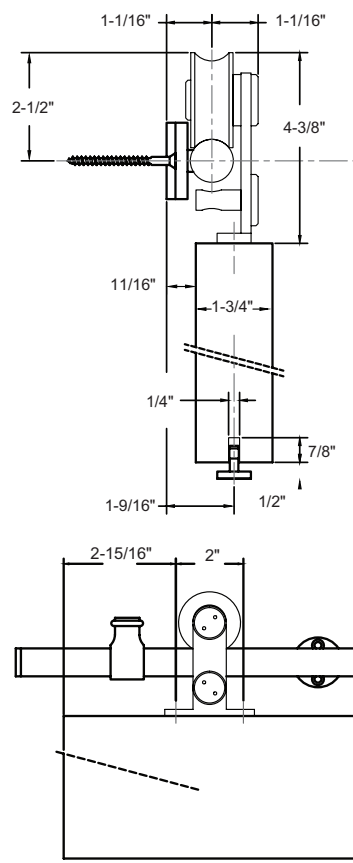
### Top Mount Round Track System — Track Length 98 7/16"

- Fits 1" to 2" Thick Door Panel
- Brushed Stainless Steel 304
- Side Wall Mount
- Nylon Coated Stainless Steel Wheels for Smooth Operation
- For Sliding Doors up to 220 lbs. Each
- Meets ADA Push Force Requirements
- 5-Year Warranty
- Order Two Sets for Bi-Parting Applications

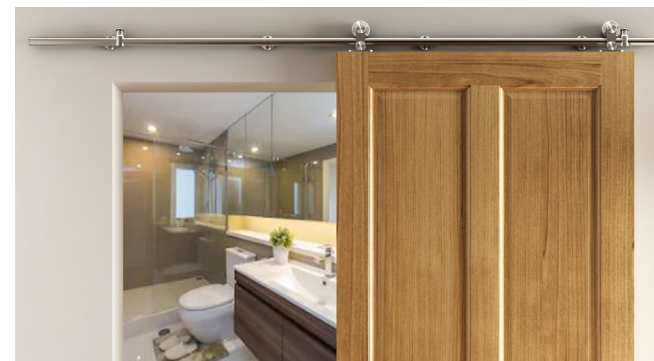
#### Complete Kits Include:

- |             |                 |
|-------------|-----------------|
| (1) Track   | (2) Door Stops  |
| (2) Hangers | (1) Floor Guide |

SLSSI-8 includes: (6) Wall Attachments



PROJECT:
SUBMITTED BY:
DATE:
NOTES:



NGP-SLI-SLSSI-8-PCS-0723-A

**NGP MEMPHIS**  
4985 East Raines Road  
Memphis, TN 38118  
[orders@ngp.com](mailto:orders@ngp.com)

**NGP VEGAS**  
4584 Calimesa Street  
Las Vegas, NV 89115  
[vegasorders@ngp.com](mailto:vegasorders@ngp.com)

**ngp.com**  
1-800-NGP-RUSH