



# SS300

## Concealed Stainless Steel Continuous Hinge

### PRODUCT CUT SHEET

|               |
|---------------|
| PROJECT:      |
| SUBMITTED BY: |
| DATE:         |
| NOTES:        |

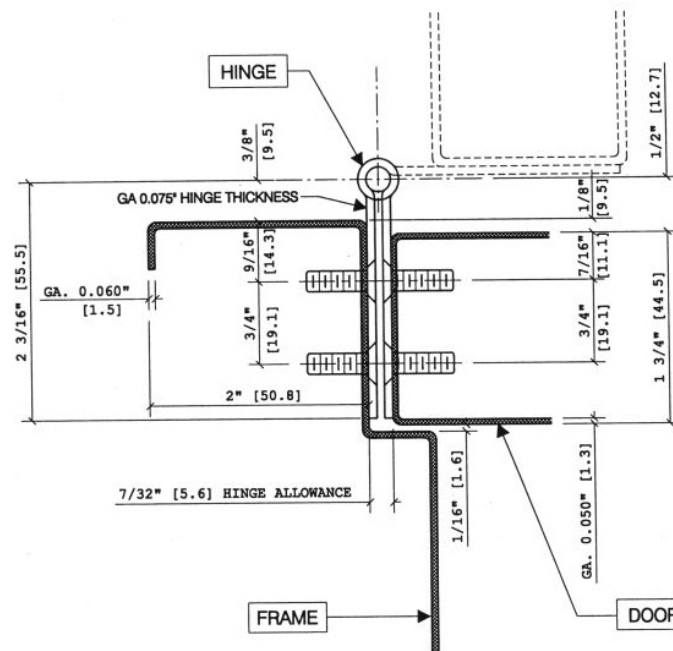
#### Up to 1/8" Inset, for 1 3/4" Doors

- Heavy-Duty Type 304, 14-Gauge Stainless Steel
- Pin and Barrel Design
- Stainless Steel Hinge Pins
- Medical Type Self-Lubricating Flanged Bearings Between Each 2" Knuckle Provide Dust-Free Quiet and Smooth Operation
- For Doors Weighing up to 600 Lbs.
- 25-Year Warranty
- #10 x 1/2" TEK Screws for Metal Doors and Frames
- #10 x 1" Wood Screws for Wood Doors
- US32D (630) Brushed Finish
- Standard Lengths: 83", 85", 95", 119"

#### Options:

- Torx Security TEK Screws
- Cut to Net Length
- Anti-Ligature Welded Hospital Tip - Specify "ALHT"
- Dutch Door Prep - Specify Door Handing, Bottom Door Leaf Length, and Clearance Between Leafs
- Electric Thru-Wire ETW8
- Electric Power Transfer Prep
- US32 (629) Polished Finish
- Welded Tips for Non-Rising Pins

#### FULL MORTISE (EDGE MOUNT)



Fire-rated 3 hours on hollow metal doors and 90 minute on wood doors. Maximum size 4'0" x 10'0".



ANSI/BHMA Certified to A156.26 American National Standard for Continuous Hinges: Grade 1 - 150 lb. Door

Note: For Door Sizing Refer to Installation Instruction.

NGP-CHG-SS300-PCS-1220-A